



# The Anthroponaut's Wordbook

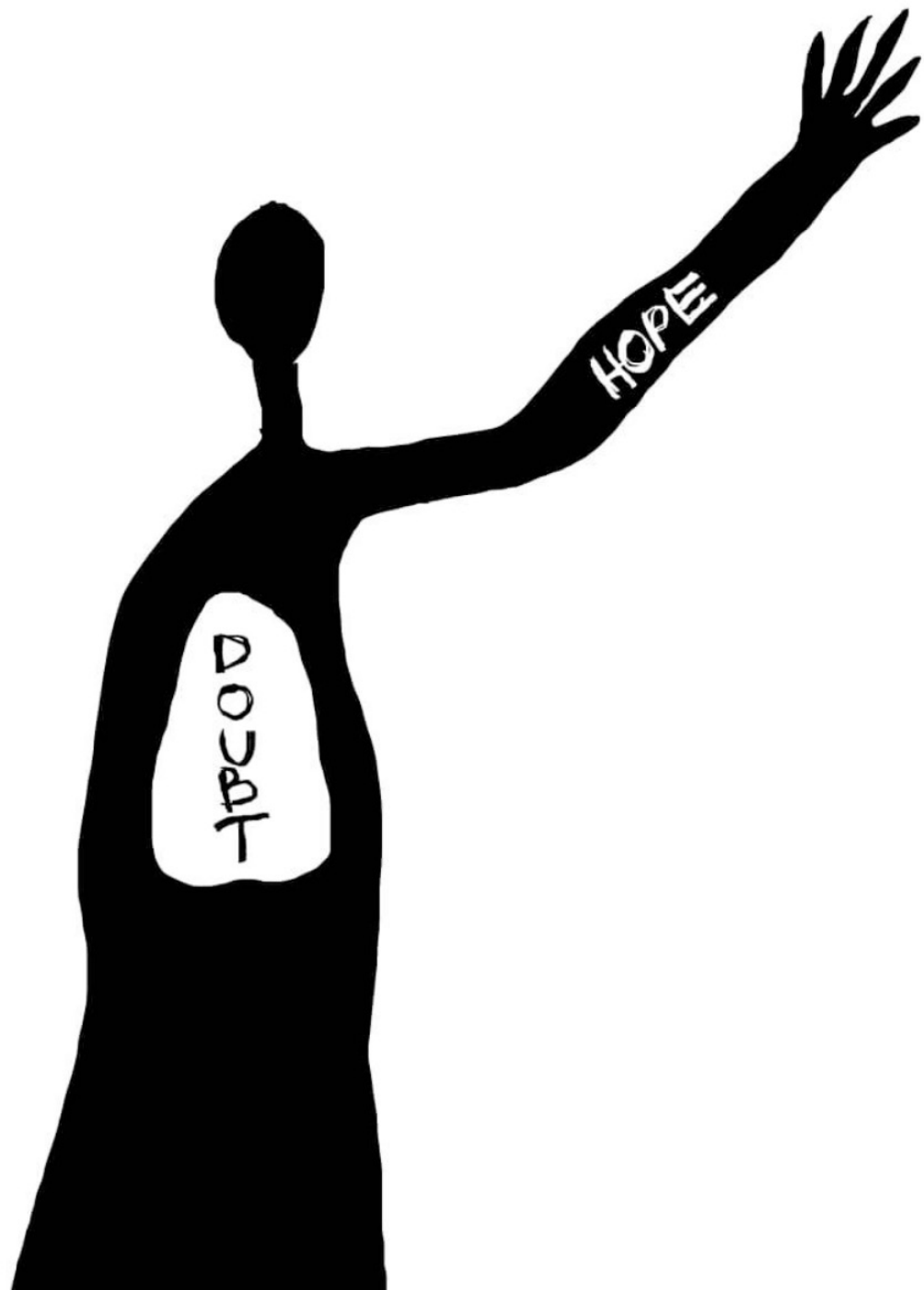
ART, SCIENCE AND A VITAL ANTHROPOCENE

*Karin Fink*



postmedia●books

Karin Fink  
BAFU Tagung  
Landschaft & Biodiversität



**\*future**

**\*environment**

**\*system**

**\*transformation**

\*collaborative

\*transdisciplinary

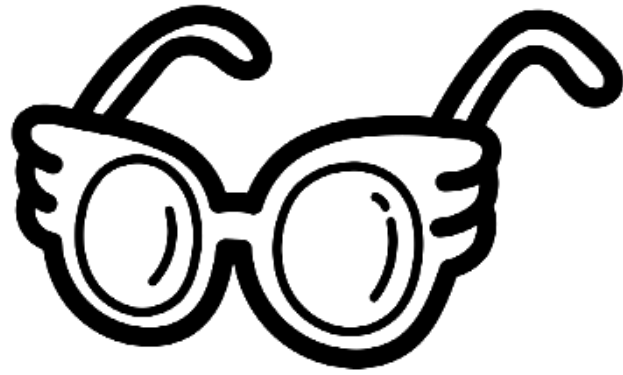
\*action-oriented

\*reflexive & responsible

\*connected

\*aesthetic

\*highly creative



**\*Was kann Kunst?**





Image credits: [Julian Charrière](#)

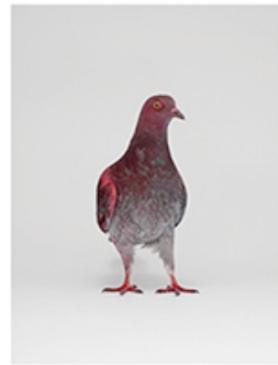
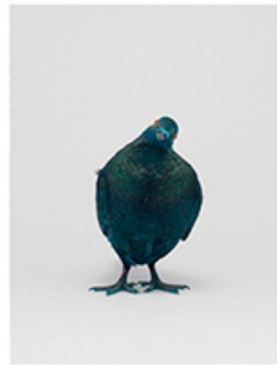
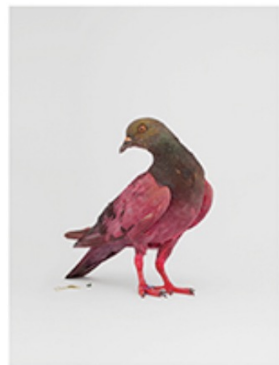
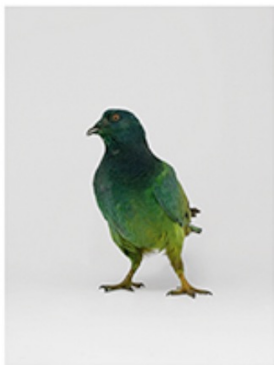
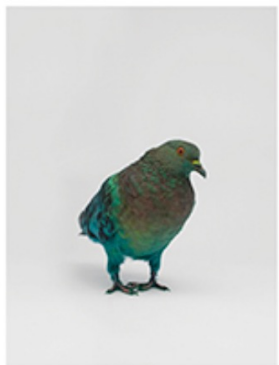
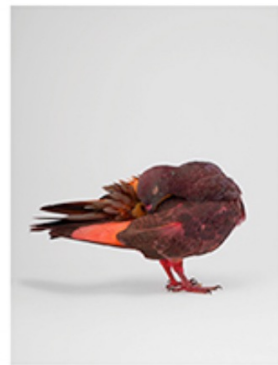
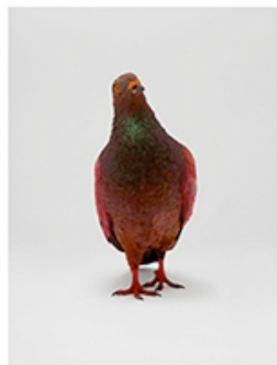
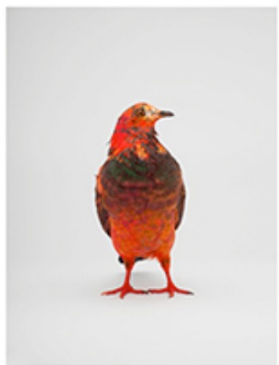




Image credits: [Julian Charrière](#)

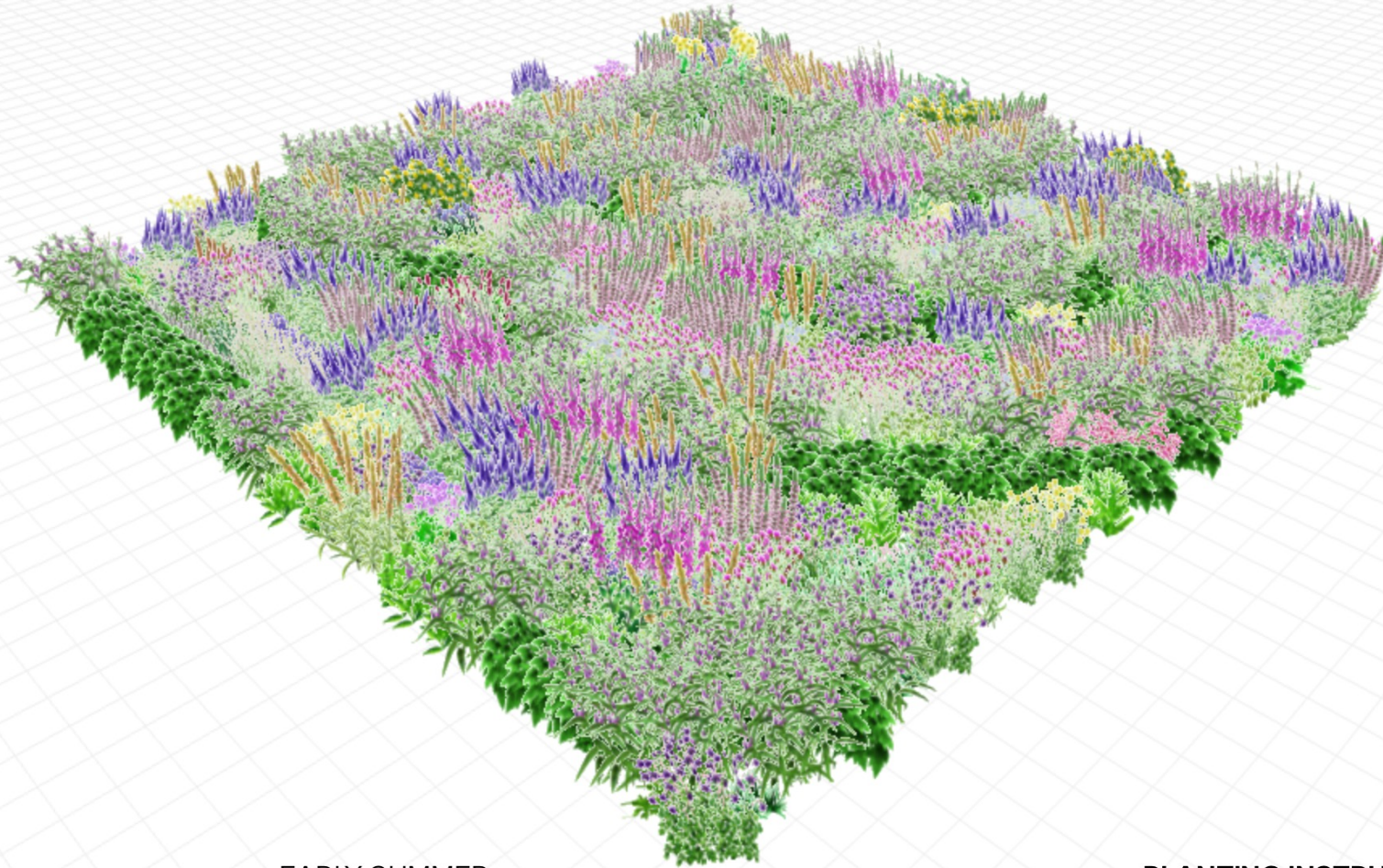




Image credits: [Thomas Thwaites](#)



# POLLINATOR PATHMAKER



3D

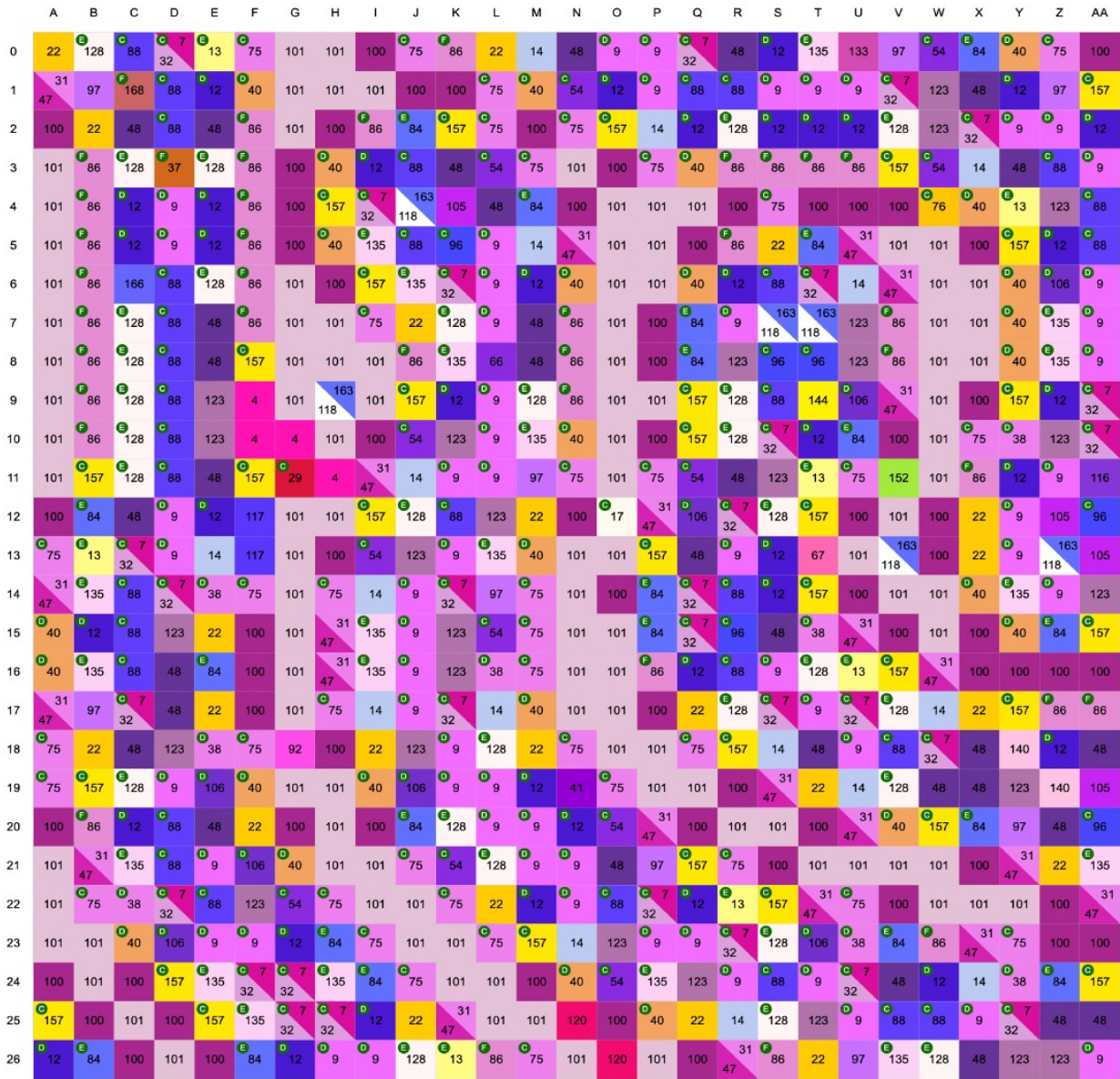


EARLY SUMMER

PLANTING INSTRUCTIONS

CREATE NEW GARDEN

Image credits: [Alexandra Daisy Ginsberg](#)



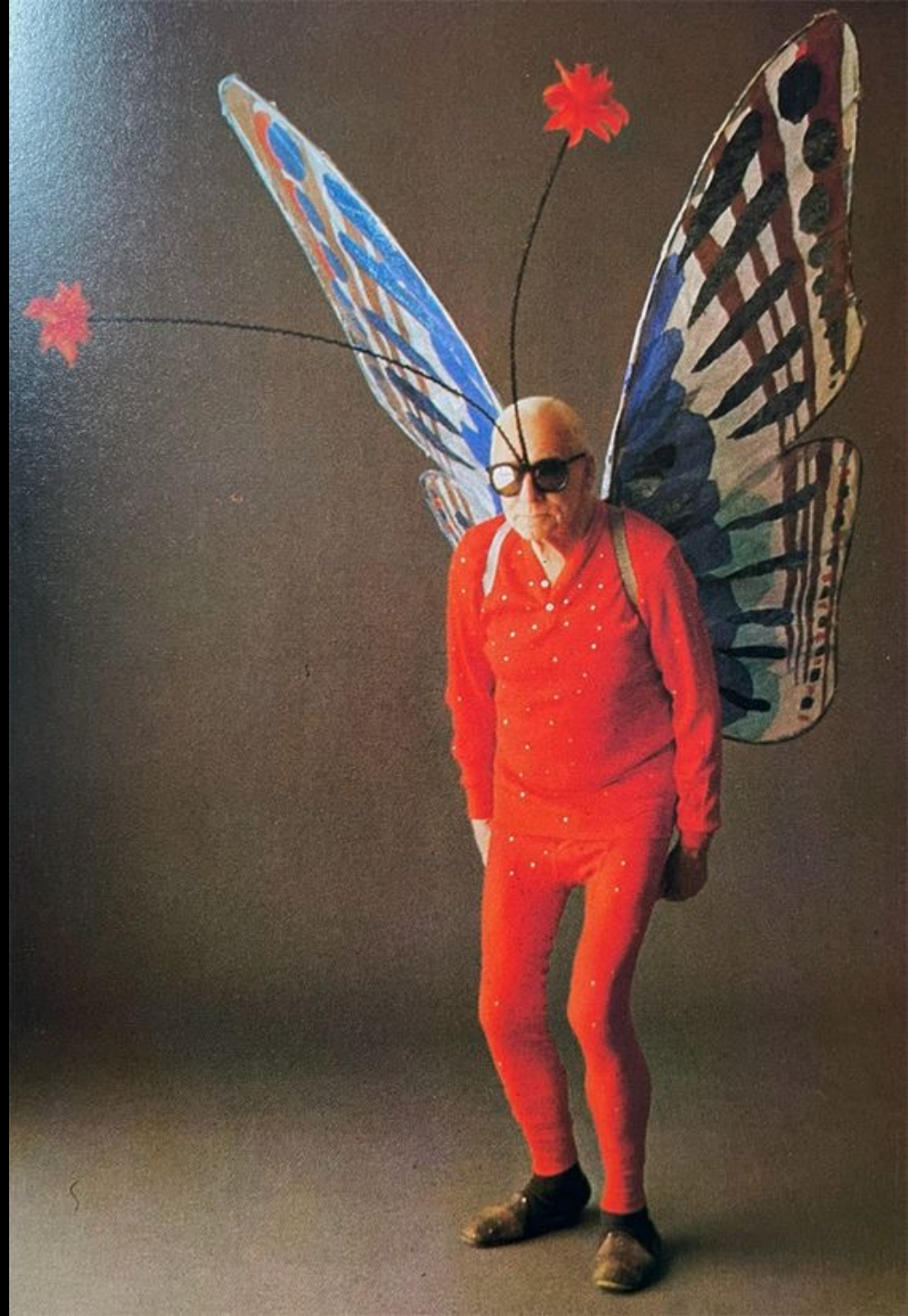
Key	ID	Plant name	Quantities	Plant Density	No. of plants to order
	C	<i>Carex divulsa</i> *	152	2	304
	D	<i>Luzula nivea</i> *	137	2	274
	101	<i>A. tomentosa</i> 'Robustissima'	105	1	105
	E	<i>Calamagrostis brachytricha</i> *	76	1	76
	100	<i>Symphytum officinale</i>	65	1	65
	9	<i>Centaurea nigra</i>	58	3	174
	75	<i>Dipsacus fullonum</i>	38	1	38
	12	<i>Aquilegia vulgaris</i>	37	3	111
	F	<i>Carex remota</i> *	37	2	74
	86	<i>Ajuga reptans</i> 'Purple Torch'	35	3	105
	48	<i>Veronica longifolia</i> 'Marietta'	32	1	32
	88	<i>Campanula carpatica</i>	32	4	128
	157	<i>Primula veris</i>	31	5	155
	7	<i>Geranium sanguineum</i>	30	2	60
	32	<i>Allium ampeloprasum</i>	30	4	120
	128	<i>Oenothera lindheimeri</i> 'Whirling Butterfly'	29	1	29
	40	<i>Digitalis ferruginea</i>	26	2	52

- \*affluence
- \*ambiguity
- \*antagonism
- \*anxiety
- \*balance
- \*bond
- \*consolation & joy
- \*crafting
- \*dialogue
- \*earth
- \*elsewhere
- \*encounter
- \*essence
- \*everyday rebellion
- \*fields of perception

- \*homo socialis
- \*humor
- \*imagery
- \*insight
- \*intersection
- \*interstice
- \*kinship
- \*language
- \*material matter
- \*narratives
- \*nucleus
- \*pathways of familiarity
- \*practicalities
- \*promise of belonging
- \*quantum beings

- \*regeneration
- \*relational aesthetics
- \*responsibility
- \*safe & just space
- \*sense
- \*state of mind
- \*system thinking
- \*time
- \*tinker
- \*tipping points
- \*values
- \*versatile lore
- \*weakness
- \* .... ?

**\*Danke!**



Ich arbeite an Schnittstelle zwischen Wissenschaft, Politik, Design und Kunst. Die gesellschaftliche Transformation hin zu mehr Nachhaltigkeit ist die Herausforderung, die mich in meiner Arbeit motiviert. Das Denken in Systemen, (Wohnen, Mobilität, Ernährung), Zukunftsstudien, Innovationsprozesse, Partizipation und unterschiedliche Wissenssysteme sowie Analoges und Digitales verbinden meine unterschiedlichen beruflichen Welten.

## Karin Fink

Wissenschaftliche Mitarbeiterin BAFU  
Co-Lead / Dozentin MA Eco-Social Design HSLU  
Geografin und Designerin

[karin.fink@hslu.ch](mailto:karin.fink@hslu.ch); [www.hslu.ch](http://www.hslu.ch)  
[karin.fink@bafu.admin.ch](mailto:karin.fink@bafu.admin.ch); [www.bafu.admin.ch](http://www.bafu.admin.ch)

[The Anthroponaut's Wordbook](#) (Amazon)



Portrait made by artist  
Patrick Tresset 's [drawing robot](#)